

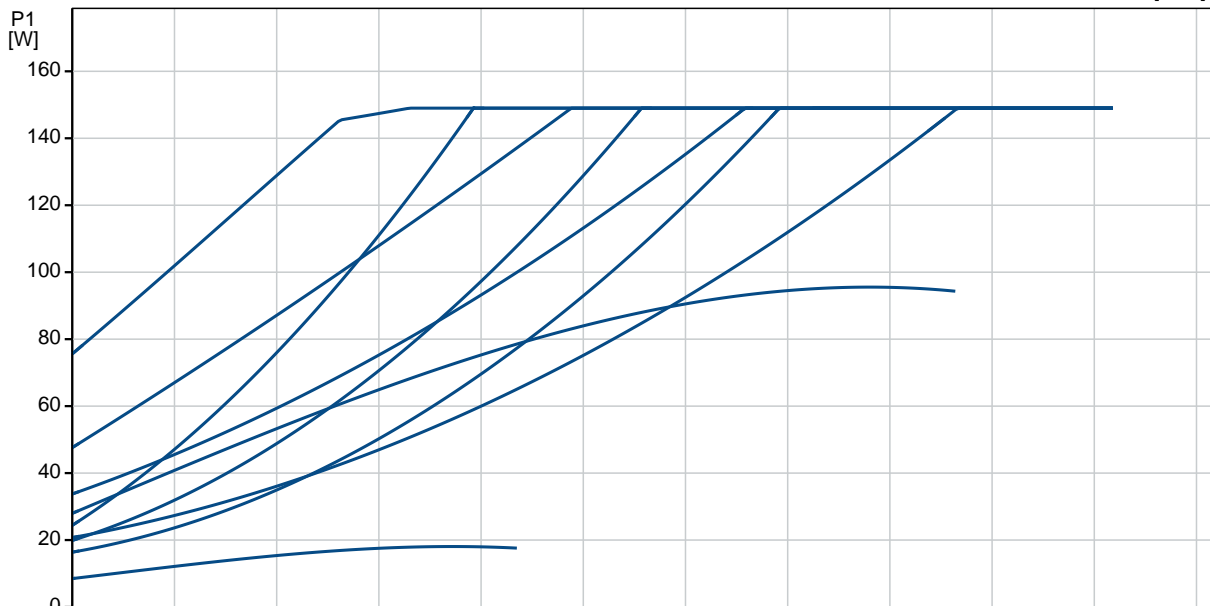
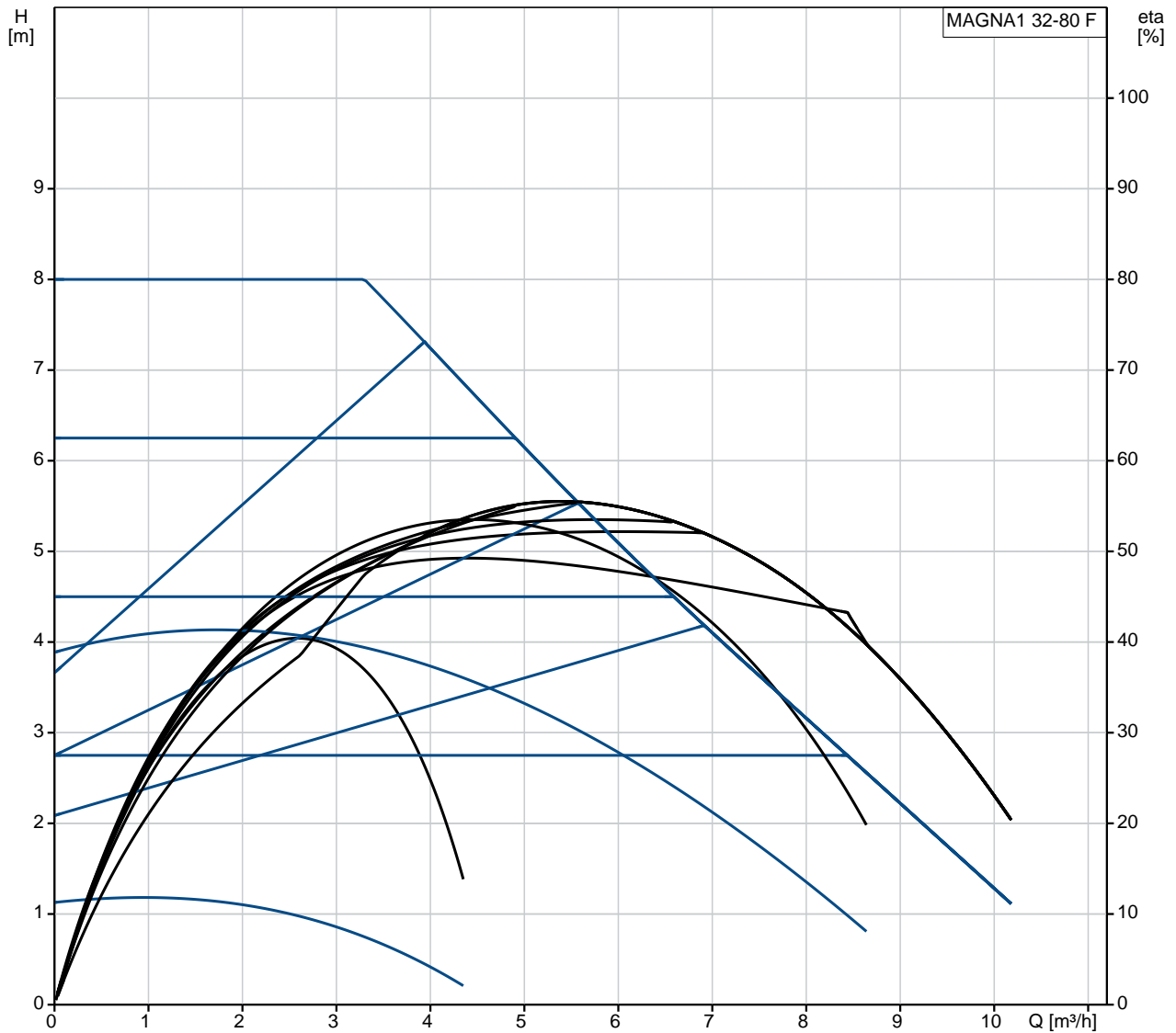
Cant. Descriere**Date electrice:**

Putere de introdus - P1: 9 .. 151 W
Frecven a re elei electrice: 50 / 60 Hz
Tensiune nominal : 1 x 230 V
Curent consumat maxim: 0.09 .. 1.22 A
Grad de protec ie (IEC 34-5): X4D
Clas de izolare (IEC 85): F

Altele:

Energie (EEI): 0.20
Greutate net : 7.5 kg
Greutate brut : 8.5 kg
Volum de livrare: 0.016 m³
Finnish LVI No.: 4615315
ara de origine: DE
Nr. tarif: 84137030

99221275 MAGNA1 32-80 F



Descriere	Valori i tipuri
-----------	-----------------

Informa ii generale:

Nume produs:: MAGNA1 32-80 F
 Nr. produs:: 99221275
 Numărul EAN:: 5712608942488
 5712608942488
 Pre : 696,39 EUR

Tehnic:

În l ime de pompare max.: 80 dm
 Clasa TF: 110
 Aprob ri pe etichet : CE,VDE,EAC,CN
 ROHS,WEEE

Model:

C

Materiale:

Corpul pompei (stator): Font
 EN-GJL-200
 Corpul pompei: ASTM A48-200B
 Rotor: PES 30%GF

Instala ie:

Gama temperaturii ambientale: 0 .. 40 °C
 Presiune de func ionare maxim : 10 bar
 Tip flan : DIN
 Racordarea pompei la instala ie: DN 32
 Presiune maxim de func ionare: PN6/10
 Distan a dintre porturi: 220 mm

Lichid:

Lichid pompat: Ap
 Gama temperaturii lichidului: -10 .. 110 °C
 Temperatura lichidului în timpul func ion rii: 60 °C

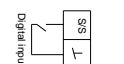
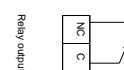
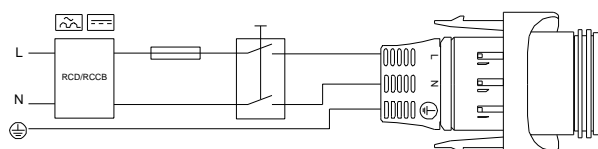
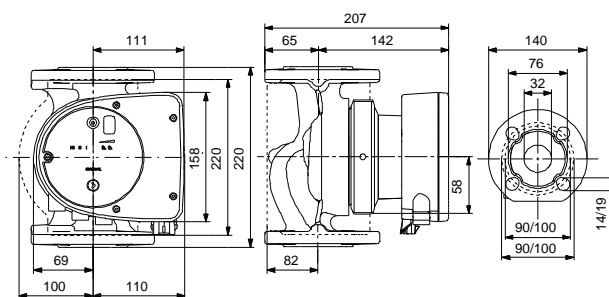
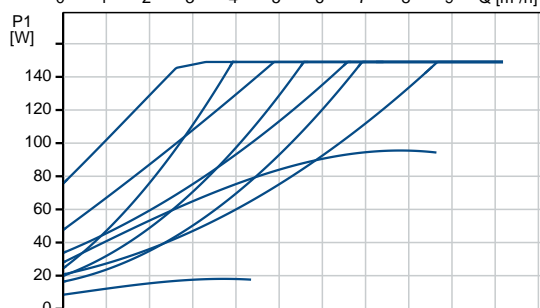
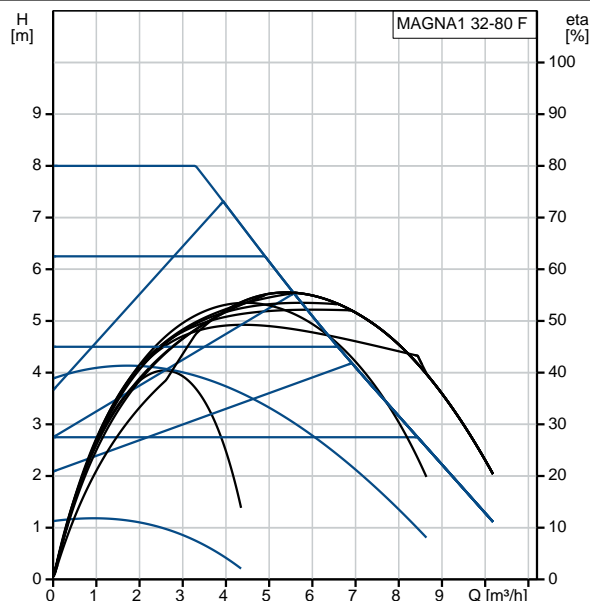
Densitate la temperatura lichidului selectat : 983.2 kg/m³

Date electrice:

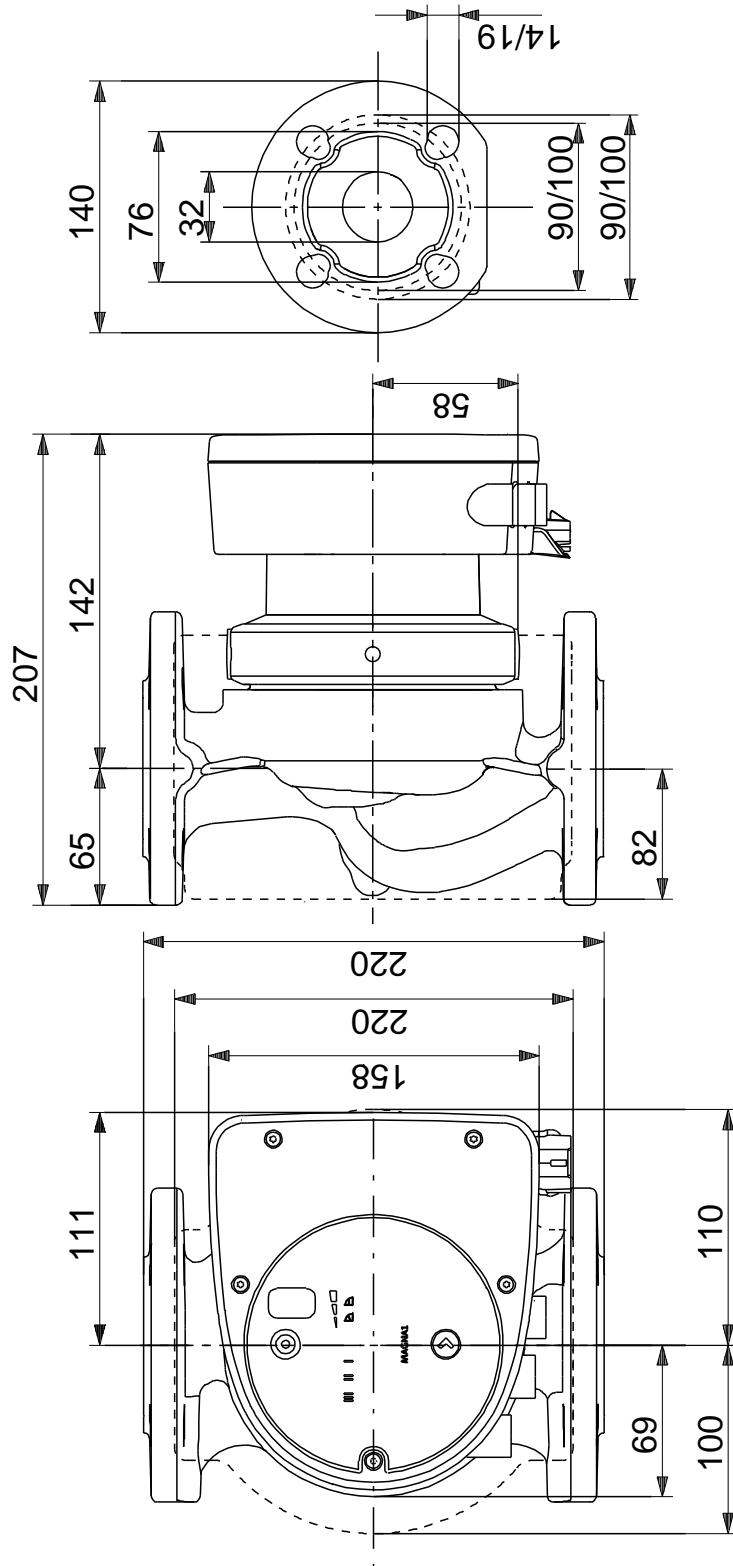
Putere de introdus - P1: 9 .. 151 W
 Frecven a re elei electrice: 50 / 60 Hz
 Tensiune nominal : 1 x 230 V
 Curent consumat maxim: 0.09 .. 1.22 A
 Grad de protec ie (IEC 34-5): X4D
 Clas de izolare (IEC 85): F

Altele:

Energie (EEI): 0.20
 Greutate net : 7.5 kg
 Greutate brut : 8.5 kg
 Volum de livrare: 0.016 m³
 Finnish LVI No.: 4615315
 ara de origine: DE
 Nr. tarif: 84137030

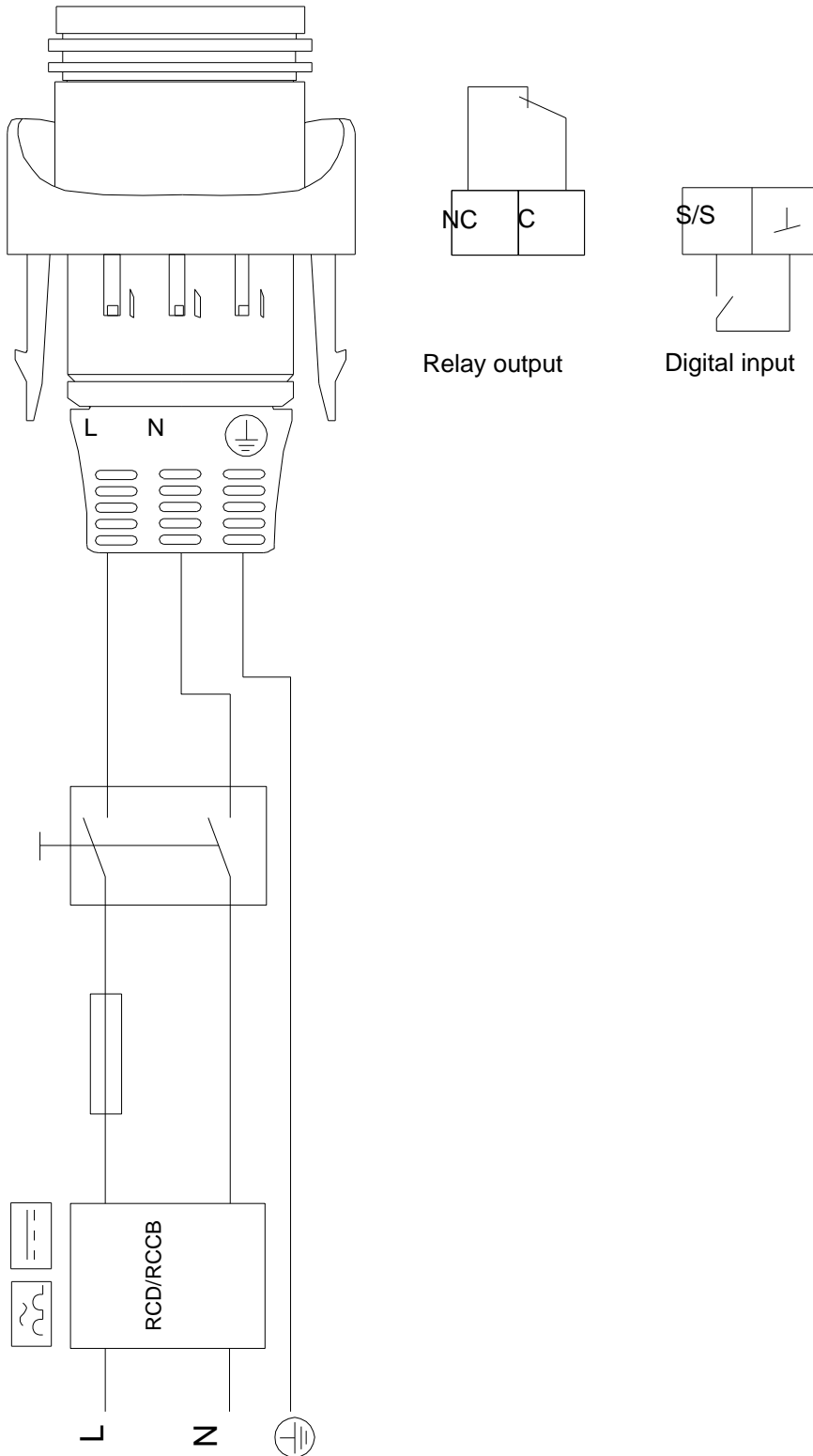


99221275 MAGNA1 32-80 F



Not : Toate unit ile sunt in [mm] daca nu sunt altele specificate.
Negare: Acest desen dimensional simplificat nu prezint toate detaliile.

99221275 MAGNA1 32-80 F



Not ! Toate unit ile sunt în [mm] dac nu sunt altele specificate.