

WARM WATER HEAT PUMP EXPLORER EVO



©StockPhoto/van Bajić



Head Office and Works: Austria Email AG

A-8720 Knittelfeld, Austriastraße 6
Tel. (03512) 700-0, Fax (03512) 700-239
Website: www.austria-email.at
E-mail: office@austria-email.at

Factory Customer Service Department:
Tel. (03512) 700-297
E-mail: kundendienst@austria-email.at

Headquarter Weiden
D-92637 Weiden/Opf., Parksteiner Straße 49
Tel. 0049/(0)961 / 63 490-0
Fax 0049/(0)961 / 63 490-30
Internet: www.austria-email.de
E-Mail: ahirmer@austria-email.de

Sales branche Brandenburg
D-14770 Brandenburg, Beetzseeufer 3
Tel. 0049/(0)3381 / 766-0
Fax 0049/(0)3381 / 766-244
E-Mail: sgobi@austria-email.de

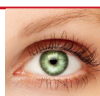
Sales branche Geldersheim
D-97505 Geldersheim, Urnenfeldstraße 18
Tel. 0049/(0)9721 / 9785 510
Fax 0049/(0)9721 / 803 535
E-Mail: feinwerk@austria-email.de

WARM WATER HEAT PUMP EXPLORER EVO



At the heart of EXPLORER EVO is the new control centre, which enables many different functions and displays them using a large colour screen. The purpose is to increase the range of service water heat pumps and to improve the user's experience further.

©StockPhoto/SHVil



All improvements at a glance The latest technology in one device...

- particularly high COP value: at 3.8 (as per EN 16147; A20/W10-55; XL)
- safe hygiene and legionella function
- easy assembly and installation
- small space and ceiling height requirement due to rotatable air connection sockets
- problem-free combination with other heating systems
- horizontal transport possible
- available at 270 and 200 L volumes, with or without a heat exchanger
- with photovoltaic function
- large colour display with accurate energy reading
- Application: -5°C to 43°C
- Smart Control

Features Atlantic Explorer Evo

- with maintenance-free ACI hybrid external current anode
- 1.8 kW additional heating element – no calcification possible due to the dry heating element
- generously sized heat exchanger (1.2 m²) to connect further energy generators
- with circulation connection
- very quiet operation

Smart Control

- Smart PV Control – intelligent photovoltaic boost function with two interfaces
- Smart Auto Control – self-learning optimal temperature per individual user profile
- Smart Control – select the most economical source of energy
- Smart Energy Control – accurate energy consumption indicator
- Smart Remote Control – I/O Home Control for control with smartphone/tablet
- Smart KWL – fan function for controlled ventilation



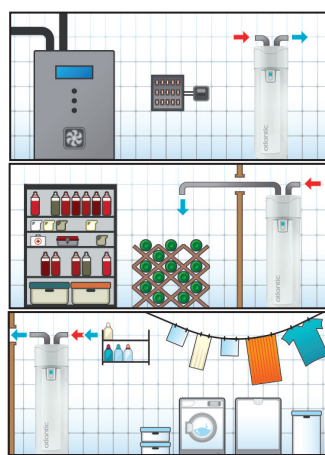
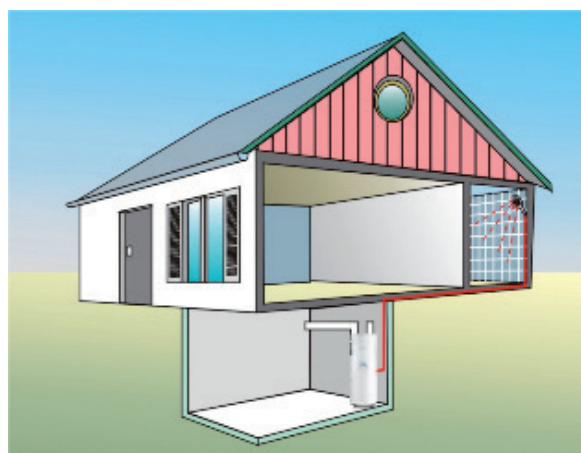
Rotatable air connection socket



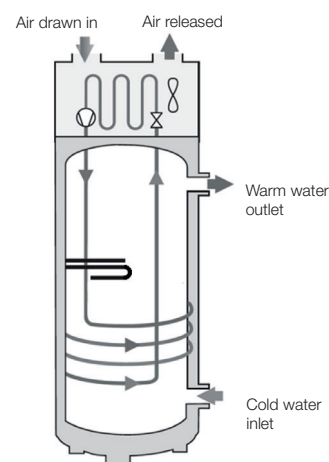
WARM WATER HEAT PUMP EXPLORER EVO



Service hot water heat pumps are extremely robust, durable and easy to incorporate into the existing house. Rotatable exhaust and intake pipes can draw in warm air and dissipate cold air wherever this is needed.



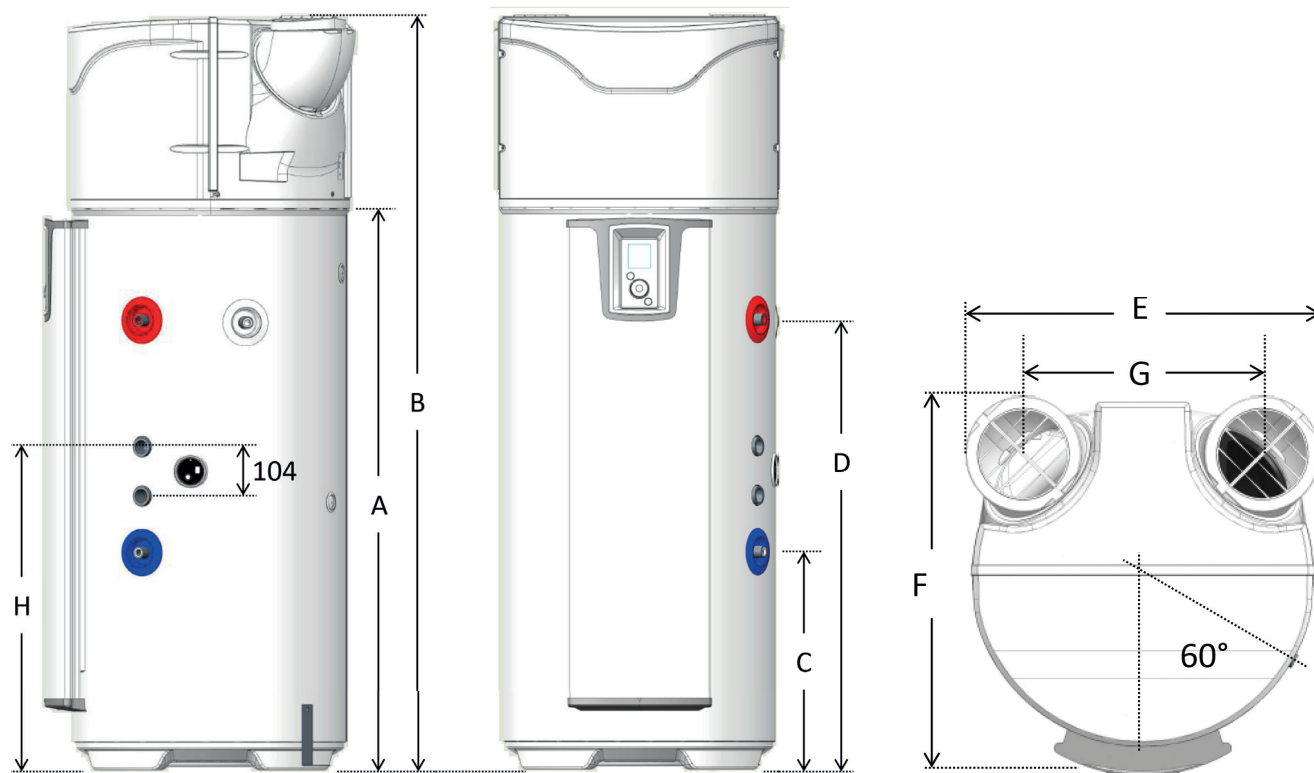
Possible areas of application-
Locations



TECHNICAL INFORMATION

Model		200 L	270 L
Dimensions (HxWxD)	mm	1609x620x665	1949x620x665
Empty weight (without heat exchanger)	kg	85	93
Empty weight (with heat exchanger)	kg	100	108
Memory capacity	L	200	270
Hot and cold water connection		3/4" M	3/4" M
Heat exchanger connection		1" M	1" M
Pipe coil heat exchange surface	m ²	1.2	1.2
Heat exchange rate at 60°C	kW	16	16
Corrosion protection		ACI Hybrid	ACI Hybrid
Nominal pressure indicators	bar	8	8
Electrical Connection (voltage/frequency)	-	230 V/50 Hz	230 V/50 Hz
Maximum power consumption of the device	W	2465	2465
Maximum power consumption of the hot pump	W	665	665
Power consumption of electric booster heater	W	1800	1800
Adjustment range for domestic hot water temperature during WP operation	°C	40 to 62	40 to 62
Adjustment range for heat pump (air temperature range)	°C	-5 + 43	-5 + 43
Air duct connection diameter	mm	160	160
Air throughput (without air duct connection) Speed 1	m ³ /h	300	300
Air throughput (without air duct connection) Speed 2	m ³ /h	390	390
Reliable pressure drop in the air circuit without reduction in performance	Pa	25	25
Sound power level	dB(A)	50.3	50.3
Sound pressure level at 2 m without obstacles	dB(A)	33.5	33.5
Refrigerant quantity R134a	kg	1.25	1.35

WARM WATER HEAT PUMP EXPLORER EVO



DIMENSIONS

Model	A Condensation run-off mm	B Height total mm	C Cold water inlet mm	D Warm water outlet mm	E Width total mm	F Depth total mm	G Centre distance openings mm	H Heat exchanger inlet mm
EXPLORER EVO 200	1221	1609	304	961	620	665	418	-
EXPLORER EVO 200 with heat exchanger	1221	1609	462	961	620	665	418	581
EXPLORER EVO 270	1562	1949	304	1300	620	665	418	-
EXPLORER EVO 270 with heat exchanger	1562	1949	462	1300	620	665	418	581

The total minimum height between floor and ceiling for 200 L should be the following: 1.81 m and for 300 L: 2.15 m.

ECO DESIGN – LABELLING

Type	Energy efficiency class
EXPLORER EVO 200	A
EXPLORER EVO 200 with heat exchanger	A
EXPLORER EVO 270	A
EXPLORER EVO 270 with heat exchanger	A