



H E A T E R S A I R C U R T A I N S



SONNIGER'S VISION

SONNIGER is a European dealer who supplies modern, ecological/eco-friendly and optimally selected units for industrial heating market. We are a group of specialists in the field of air heaters and curtains. Products supplied by SONNIGER are the simple choice due to its right range of products that precisely respond to market needs.

SONNIGER consultants are a group of open-minded, competent, dynamic people who are always ready to co-operate. These ties in with the whole HEATING PARTNERS philosophy, whose main objective is to support companies in the field of heating systems.

As well as offering help to make the right choice of devices, we are able to advise how to attract new customers efficiently and effectively, perform sales duties or build and create a reliable image for your company.

SONNIGER HEATING PARTNERS

- Competitive products
- Simple choice
- Experience and knowledge
- Staff



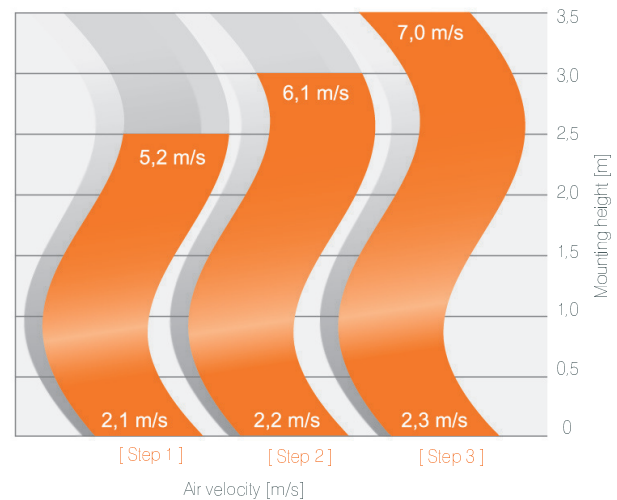
GUARD is a professional and attractive air curtain, whose main objective is to maintain protective barrier at the entrance to the building.

GUARD air curtain protects the entrance to the building from either cold or warm air as well as dust or insects. Its application allows to minimize the loss of heat, which both influences operating costs of the building and comfort of work.

GUARD air curtains is designed/ purposed for facilities where height of installation of devices does not exceed 3,5m.



Air flow rates



ADVANTAGES OF GUARD

- Modern design
- Air throw up to 3,5m
- Length of 100, 150,200
- Water, electrical, cold air curtain
- Automatic control included in the price

Automatic:



Each GUARD air curtain is equipped with control panel, which allows to regulate 3 steps of air exhaust and 2 steps of heat capacity (in case of electric version)

TECHNICAL DATA

		Curtain with water heater			Curtain with electric heater			Curtain without heater		
		GUARD 100W	GUARD 150W	GUARD 200W	GUARD 100E	GUARD 150E	GUARD 200E	GUARD 100C	GUARD 150C	GUARD 200C
Length of unit	[m]	1	1,5	2	1	1,5	2	1	1,5	2
max installation height	[m]	3,5	3,5	3,5	3,5	3,5	3,5	3,5	3,5	3,5
Heat output *	[kW]	6-10	10-18	15-25	3-6	6-9	9-12	–	–	–
Max air output	[m³/h]	1050	1550	2100	1250	1800	2550	1300	1800	2650
Max working pressure	[MPa]	1,6	1,6	1,6	–	–	–	–	–	–
Diameter of connection nozzles	[cale]	1/2	1/2	1/2	–	–	–	–	–	–
maximum water pressure drop **	[kPa]	2,34	8,18	21,6	–	–	–	–	–	–
Power supply	[V/Hz]	230 / 50	230 / 50	230 / 50	400 / 50	400 / 50	400 / 50	230 / 50	230 / 50	230 / 50
Motor power	[kW]	0,21	0,21	0,21	0,21	0,21	0,21	0,21	0,21	0,21
Power consumption	[A]	0,5	0,6	0,6	9,2	13,2	17,5	0,6	0,6	0,7
Weight filled with water / without water	[kg]	16	21	27	16	19	25	15	18	24
Volume level	[dB (A)]	44	44,5	46	47	48	48,5	44	44,5	46
Protection class IP		IP20	IP20	IP20	IP20	IP20	IP20	IP20	IP20	IP20

* Heat output range for parameters of water 90/70°C and temperature of inlet air +10°C

** Max water pressure drop for parameters 90/70°C and temperature of inlet air +10°C

WATER CURTAINS

GUARD 100W

Inlet/outlet water temperature	Water 60/40 °C					Water 70/50 °C					Water 90/70 °C					
	Air curtains with water heater - 1500 m³/h															
Inlet Air Temperature	[°C]	0	5	10	15	20	0	5	10	15	20	0	5	10	15	20
Heat Output	[kW]	6,3	5,6	4,8	4,2	3,5	7,7	6,9	6,2	5,4	4,7	10,5	9,7	8,8	8,1	7,3
Outlet Air Temperature	[°C]	21,4	24,0	26,8	29,5	32,3	26,4	29,0	31,6	34,3	37,0	37,1	39,5	41,9	44,4	46,9
Water Flow	[m³/h]	0,3	0,3	0,2	0,2	0,1	0,3	0,3	0,3	0,2	0,2	0,4	0,4	0,4	0,4	0,3
Hydraulic Resistance	[kPa]	1,2	0,9	0,7	0,5	0,3	1,8	1,6	1,3	1,1	0,9	3,0	2,7	2,4	2,1	1,9

GUARD 150W

Inlet/outlet water temperature	Water 60/40 °C					Water 70/50 °C					Water 90/70 °C					
	Air curtains with waterheater- 2000 m³/h															
Inlet Air Temperature	[°C]	0	5	10	15	20	0	5	10	15	20	0	5	10	15	20
Heat Output	[kW]	10,6	9,4	8,2	7,0	5,9	12,9	11,6	10,4	9,2	8,0	17,7	16,3	14,9	13,6	12,4
Outlet Air Temperature	[°C]	23,3	25,7	28,3	30,8	33,4	28,7	31,1	33,5	35,9	38,4	40,3	42,4	44,7	46,9	49,2
Water Flow	[m³/h]	0,5	0,4	0,4	0,3	0,3	0,5	0,5	0,4	0,4	0,3	0,8	0,7	0,6	0,6	0,5
Hydraulic Resistance	[kPa]	2,6	2,3	2,1	1,9	1,7	3,3	3,1	2,8	2,4	2,2	4,1	3,7	3,5	3,3	3,0

GUARD 200W

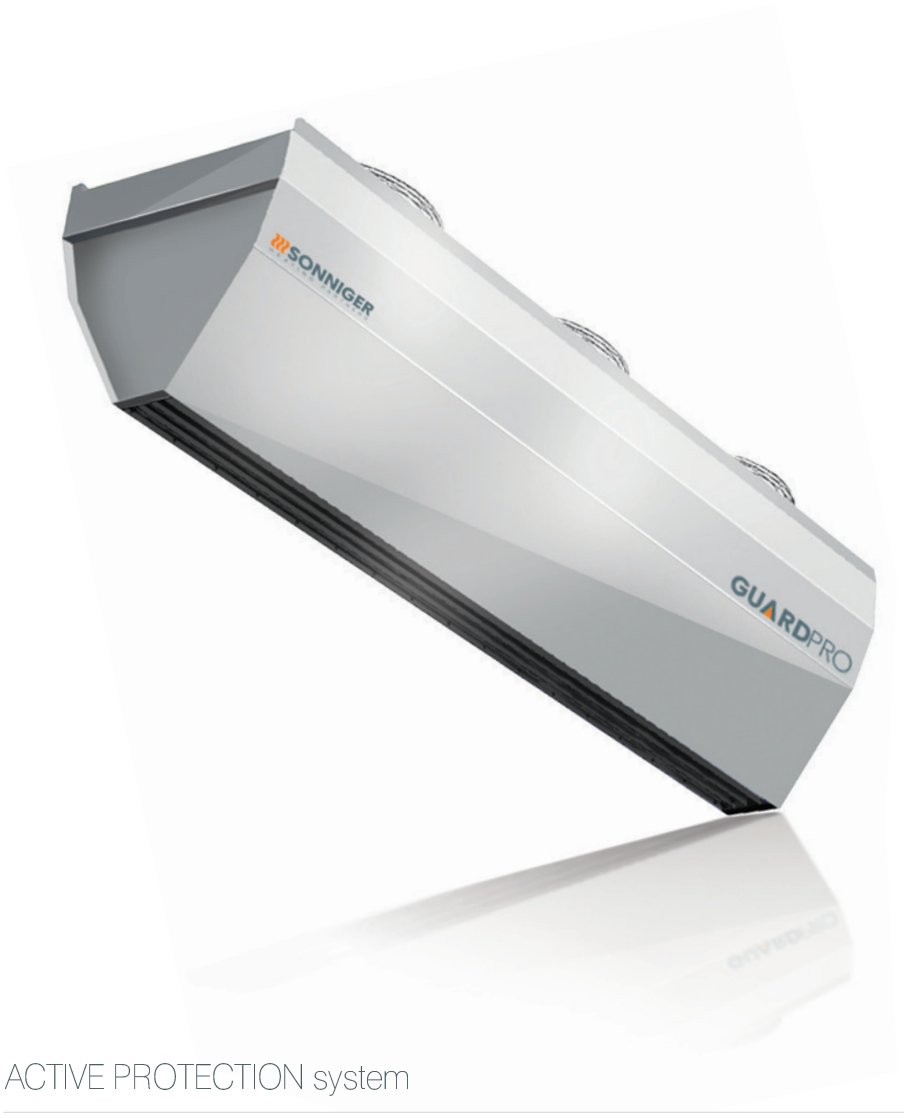
Inlet/outlet water temperature	Water 60/40 °C					Water 70/50 °C					Water 90/70 °C					
	Air curtains with waterheater- 2800 m³/h															
Inlet Air Temperature	[°C]	0	5	10	15	20	0	5	10	15	20	0	5	10	15	20
Heat Output	[kW]	15,3	13,5	11,8	10,1	8,5	18,6	16,7	15,0	13,2	11,5	25,4	23,4	21,5	19,6	17,8
Outlet Air Temperature	[°C]	24,7	27,0	29,4	31,8	34,2	30,4	32,6	34,9	37,2	39,6	42,6	44,6	46,7	48,8	51,0
Water Flow	[m³/h]	0,6	0,6	0,5	0,4	0,4	0,8	0,7	0,6	0,6	0,5	1,1	1,0	0,9	0,8	0,8
Hydraulic Resistance	[kPa]	2,4	2,0	1,8	1,4	1,2	3,0	2,6	2,2	1,9	1,7	5,5	5,1	4,8	4,4	3,9

ELECTRIC AIR CURTAINS

GUARD 100E, 150E, 200E

Parameters of Heating Medium	GUARD 100E					GUARD 150E					GUARD 200E					
	Inlet/outlet water temperature	[°C]	0	5	10	15	20	0	5	10	15	20	0	5	10	15
Heat output [kW]	[kW]	6,2	6,2	6,2	6,2	6,2	9,1	9,1	9,1	9,1	9,1	12,2	12,2	12,2	12,2	12,2
Outlet air temperature [°C]	[°C]	15,9	20,9	25,9	30,9	35,9	15,9	20,9	25,9	30,9	35,9	14,8	19,8	24,8	29,8	34,8

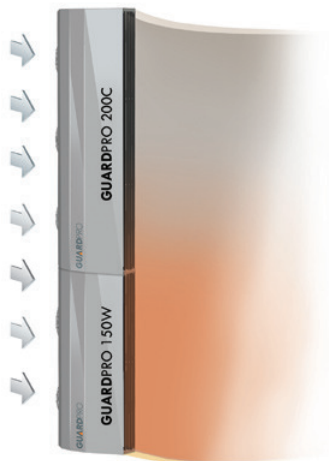
GUARDPRO is a line of professional and effective devices/products purposed for protecting industrial premises from the loss of heat energy through gateway (vehicle) ranging from 3-7,5 m thanks to high efficiency and applying modular construction.



ADVANTAGES OF GUARDPRO

- Air throw up to 7,5 m
- Modular system based on lenght of air curtains 1,5 m and 2 m
- Vertical or horizontal assembly
- ACTIVE PROTECTION System

ACTIVE PROTECTION system



ACTIVE PROTECTION system improves effectivity of air bareer which protects entrance doors. If you decide on **ACTIVE PROTECTION system**, which is the assembly of curtains with water exchanger and without one, you have to mount air curtains with water exchangers on the bottom. Hot air leaving bottom curtain will move into upper side and will create temperature comfort for users.

Automatic Control



Doorslop



SPEEDER



CONTROLBOX

TECHNICAL DATA

		Curtain with waterheater		Curtain without heater	
		GUARDPRO 150W	GUARDPRO 200W	GUARDPRO 150C	GUARDPRO 200C
Lenght of unit	[m]	1,5	2	1,5	2
Max airflow range	[m]	7,5	7,5	7,5	7,5
Heat output	[kW]	33	47	-	-
Max air output	[m³/h]	6 500	9 000	6 800	9 200
Max working pressure	[MPa]	1,6	1,6	-	-
Diameter of connection nozzles	[cale]	3/4"	3/4"	-	-
Power supply	[V/Hz]	230/50	230/50	230/50	230/50
Motor power	[kW]	0,5	0,75	0,5	0,75
Power consumption	[A]	2,4	3,6	2,4	3,6
Weight filled with water / without water	[kg]	46/44	62/60	37	51
Volume level	dB (A)	58	60	58	60
Protection class IP		IP 54	IP 54	IP 54	IP 54

* for water parameters 90/70 C, inlet air temperature 0 C

GUARDPRO 150W

Water 60/40 °C

Water 70/50 °C

Water 90/70 °C

Air flow - 6500 m3/h

		Water 60/40 °C					Water 70/50 °C					Water 90/70 °C				
inlet air temperature	[°C]	0	5	10	15	20	0	5	10	15	20	0	5	10	15	20
heat output	[kW]	19,1	17,0	14,9	12,8	10,7	23,9	21,5	19,2	17,0	14,7	33,0	30,8	28,5	26,2	23,9
outlet air temperature	[°C]	8,8	12,7	16,7	20,6	24,5	10,5	14,5	18,6	22,6	26,5	14,3	18,2	22,2	26,2	30,2
water flow	[m3/h]	0,7	0,7	0,7	0,4	0,4	1,1	0,7	0,7	0,7	0,7	1,4	0,7	0,7	0,7	0,7
pressure drop	[kPa]	2,4	1,8	1,3	0,9	0,5	3,7	3,1	2,5	2,0	1,5	6,7	5,9	5,2	4,4	3,8

GUARDPRO 200W

Water 60/40 °C

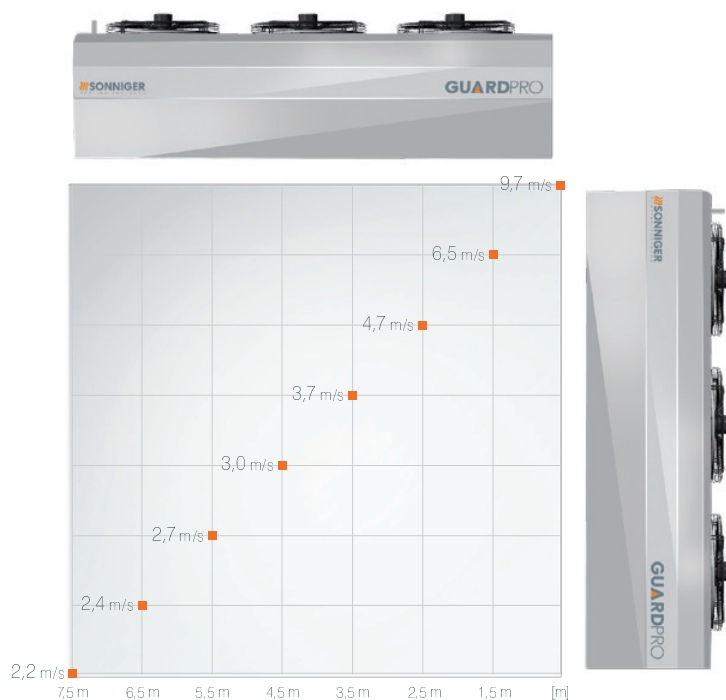
Water 70/50 °C

Water 90/70 °C

Air flow - 9000 m3/h

		Water 60/40 °C					Water 70/50 °C					Water 90/70 °C				
inlet air temperature	[°C]	0	5	10	15	20	0	5	10	15	20	0	5	10	15	20
heat output	[kW]	29,1	25,5	22,1	18,9	15,8	35,1	31,8	28,6	25,4	22,3	47,0	43,4	39,9	36,5	33,2
outlet air temperature	[°C]	8,7	12,7	16,6	20,6	24,6	10,4	14,4	18,4	22,4	26,4	14,1	18,1	22,1	26,1	30,1
water flow	[m3/h]	1,1	1,1	0,7	0,7	0,7	1,4	0,7	0,7	0,7	0,4	1,8	1,8	1,4	1,4	1,4
pressure drop	[kPa]	5,6	4,4	6,1	2,5	1,7	8,5	7,1	5,8	4,7	3,7	15,0	13,0	12,0	9,9	8,5

Speed of air flow



**New
Standard**



INDUSTRIAL AIR CURTAIN
GUARDPRO

- Competitive price
- Modern design
- Strong technical parameters, up to 7,5 installation height
- Innovative connection system of curtain modules

SONNIGER
HEATING PARTNERS

SONNIGER Polska Sp. z o.o. Sp. k.
ul. Śląska 35/37 • 81-310 Gdynia
tel. 058 785 34 80 • fax 058 785 34 81
poland@sonniger.com

www.sonniger.com