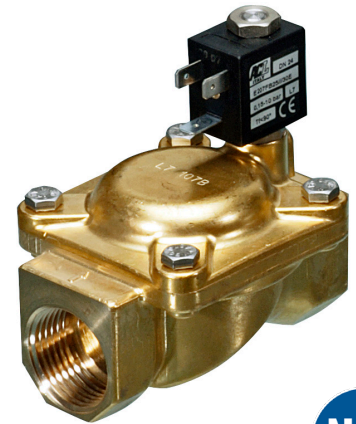


Descriere

Ventil electromagnetic, 2 cai, normal deschis cu membrana servo-comandata

Construcie

Corp si capac Alama-Alama cu putin plumb NSF 61
 Tub intern AISI 303
 Piston si miez AISI 430FR
 Arc AISI 302
 Membrane NBR - FPM - EPDM

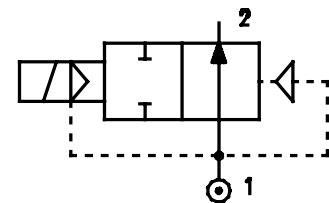


Caracteristici

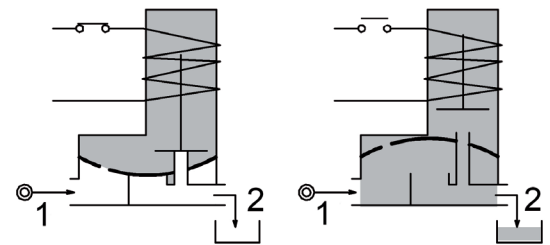
Presiune minima diferentiala 0,15bar
 Presiune maxima permisa PS 25bar^④
 Vascozitate maxima fluid 25cSt (mm²/s)
 Temperatura ambienta de la -10°C la +80°C in functie de bobina. Pozitie recomandata de montaj - cu bobina in plan vertical



Certificare WRAS - 240702047



4



COD ① ②	Conexiune G ISO 228	Orificiu mm	Kv m ³ /h	Presiune diferentiala bar		Putere nominala			Bobina		Garnitura ①	Gama temp. °C	
				Min	Max	CA Inrush	VA Holding	CC Watt	Seria	latime			
E207B...10///...	1/4"	10	1.5	0.15	15	15							
E207C...10///...	3/8"	10	1.7	0.15	15	15					NBR=B	-10 +90	
E207C...12///...	3/8"	12	2.2	0.15	15	15							
E207D...12///...	1/2"	12	2.5	0.15	15	15	12	8	6.5	3	22	EPDM=E	-10 +140
E207E...18///...	3/4"	18	5.5	0.15	13	13							
E207F...25///...	1"	25	10.2	0.15	10	10						FPM=V	-10 +140
E207G...30///...	1" 1/4	30	15	0.15	10	10							
③E207C...12/W/...	3/8"	12	2.2	0.5	15	15	12	8	6.5	3	22	NBR=B	-10 +90
③E207D...12/W/...	1/2"	12	2.5	0.5	15	15							

- ① Garnitura
 - ② Bobina
 - ③ Membrana ranforsata
- Exemplu: E207DB12///301 garnitura NBR
 Bobina 24V CC

④ Presiunea maxima admisa pentru abur PS 2,5bar (presiune manometrica)

Bobina ②	Curent alternativ 50/60Hz (V)							Curent continuu (V)			Conexiune electrica	Conector
	12	24	48	110	220 230	240	380	12	24	48		
Seria 3 Latime 22	30A	30B	30C	30D	30E	30F	30G	300	301	302	DIN 46244	PG9 code 10348000

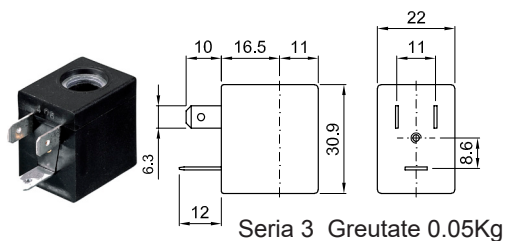
Descriere
Clasa izolare - F
Toleranta voltaj
CA +15% -10%
CC ± 10%
Clasa protectie
IP65 cu conectorul montat
IP00 fara conector

Clasa serviciu ED100%

Optiuni
Clasa H izolata
Cablu atasat

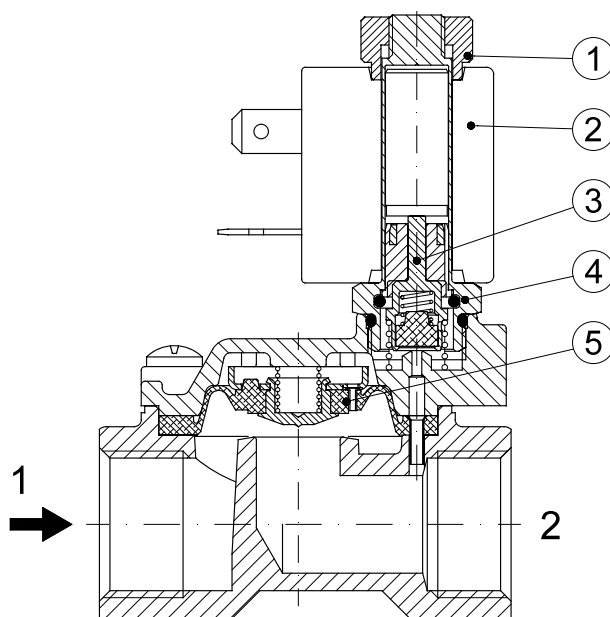


bobine certificate

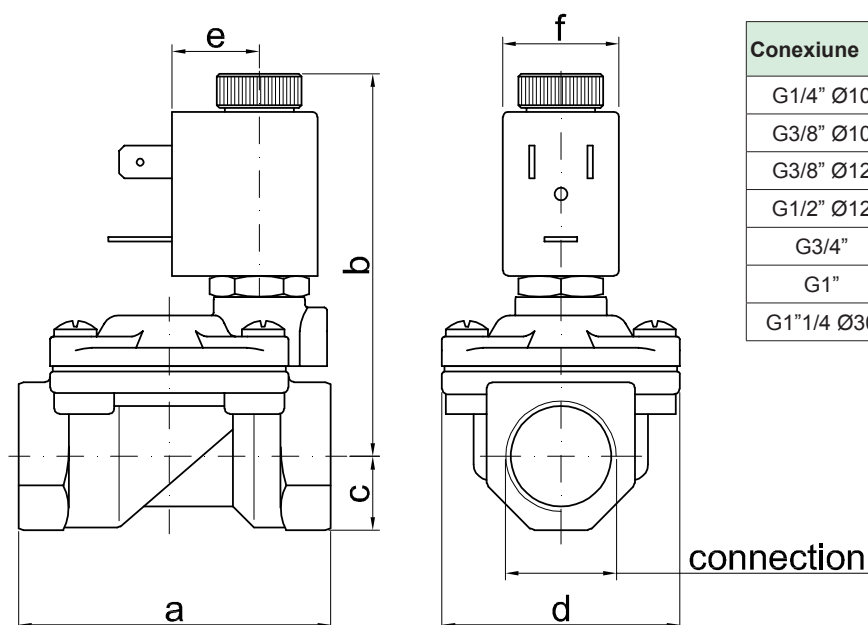


Lista piese schimb

1. Piulita fixare bobina
2. Bobina
3. Ansamble garnitura
4. Tub armatura cu miez
5. Membrana



Dimensiuni



Conexiune	a	b	c	d	e	f	greutate Kg
G1/4" Ø10	49	65	11	32	16	22	0.23
G3/8" Ø10	49	65	11	32	16	22	0.24
G3/8" Ø12	59	73	14	45	16	22	0.42
G1/2" Ø12	59	73	14	45	16	22	0.39
G3/4"	79	76	18	55	16	22	0.65
G1"	96	85	20	72	16	22	1.05
G1"1/4 Ø30	119	96	25	85	16	22	1.70